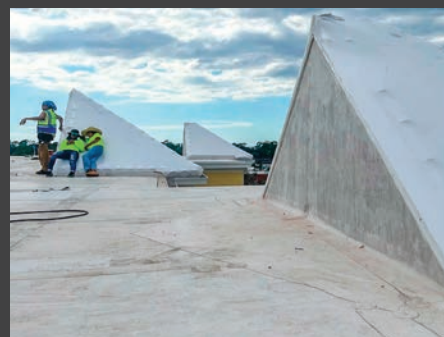


BEFORE

AFTER



IN PARTNERSHIP WITH

Insurcomm
RESTORATION PROFESSIONALS AT WORK™

DESCRIPTION

This senior living center was so badly damaged by Hurricane Ian. This community had quite a few different roof types — Spanish tile, TPO or PVC, and shingle. One building was a medical center that had a Spanish tile roof where a zero tolerance policy existed for water intrusion due to the medical equipment. Shrink-wrap was applied to entire medical center. Shrink-wrap was also applied to the entire TPO roof on the living center.

PROJECT DETAILS

Client:	Insurcomm
Event Type:	Hurricane
Building Type:	Assisted Living
Square Footage:	48000
Scope:	Wrap

STORMWRAPPERS
EMERGENCY ENCLOSURE EXPERTS

888-8WRAPIT
STORMWRAPPERS.COM



DESCRIPTION

A tornado caused destruction to the facilities of solar site work contractor. It was necessary to temporary roof the structure with shrink-wrap, board up a portion of the building, and create temporary high bay garage doors.

PROJECT DETAILS

Client:	StormWrappers
Event Type:	Tornado
Building Type:	Warehouse
Square Footage:	5800
Scope:	Wrap, Board-up



888-8WRAPIT
STORMWRAPPERS.COM