

**EMERGENCY ENCLOSURE EXPERTS**



**Subcontractor Capabilities**





## EMERGENCY ENCLOSURE EXPERTS

**THE SUPERIOR ALTERNATIVE TO BLUE TARPS FOR PROTECTING  
A BUILDING AND ITS CONTENTS AFTER DISASTER STRIKES**

- **LEAKPROOF**
- **WIND RESISTANT**
- **AESTHETIC APPEARANCE**
- **QUIET**
- **FOR SIMPLE OR SEVERE DAMAGE**
- **6 MONTH WARRANTY**
- **DISASTER-AREA PROVEN**
- **INSURER APPROVED**

## **NATIONAL COVERAGE**

**ANYWHERE IN ALL 50 STATES  
(Includes Alaska and Hawaii)**

We are among the largest installers of emergency enclosure shrink-wrap by square foot in the United States, helping building owners in several of the most severely damaged areas protect their property from sustaining further damage.



**888-8WRAPIT**  
**stormwrappers.com**

# **WE PROVIDE POST-DISASTER SOLUTIONS**

## **WHY CHOOSE STORMWRAPPERS?**

### **FAST SERVICE**

Our rapid response limits further building and property damage.

### **BETTER PROTECTION THAN TARPS, GUARANTEED**

Unlike tarps which last only about a month, look unsightly and are leak prone, our shrink-wrap protects your property against further damage for six months, guaranteed with a finished look.

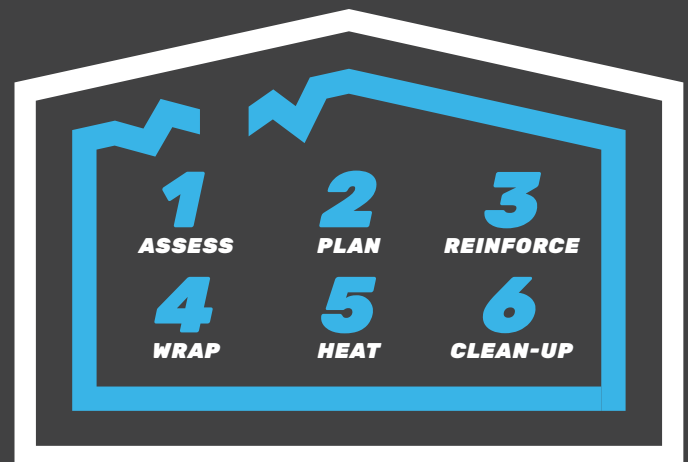
### **INSURANCE PROCESS ASSISTANCE**

Our experience in navigating the insurance claims process can help the process move faster.

### **A PIONEER AND LEADER**

StormWrappers was among the first providers of emergency enclosures using the superior shrink-wrapping alternative to traditional blue tarps. We are among the largest installers of emergency enclosure shrink-wrap by square foot in the United States, helping building owners in several of the most severely damaged areas protect their property from sustaining further damage.

## **HOW IT WORKS**



1. A StormWrappers expert performs a comprehensive assessment of building damage and the immediate environmental conditions.
2. StormWrappers provides a detailed emergency enclosure plan and quote based on the assessment.
3. A StormWrappers project team addresses any structural issues necessary for a secure building wrap.
4. The team custom cuts and applies the wrapping material.
5. The material is heat treated to achieve a secure, leakproof shrink-wrap of the affected areas.
6. The team removes any excess material before departing the site.

# BLUE TARP



**~~LEAKPROOF~~** X

**~~WIND RESISTANT~~** X

**~~QUIET~~** X

**~~AESTHETIC APPEARANCE~~** X

**~~6-MONTH WARRANTY~~** X

**~~DISASTER-AREA PROVEN~~** X

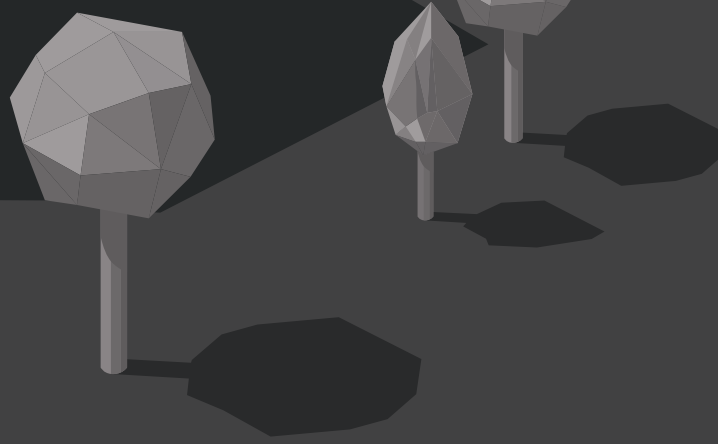
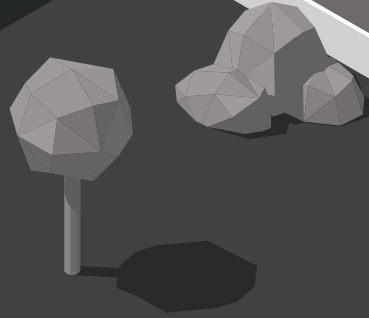
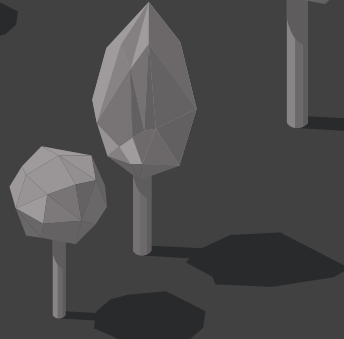
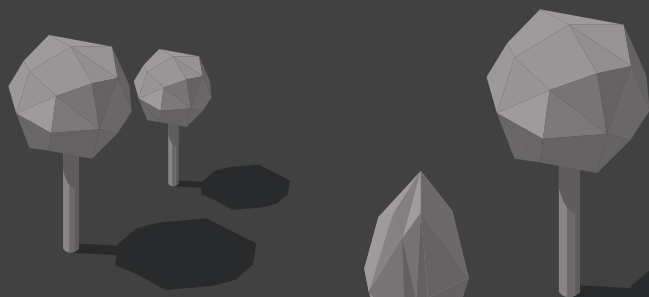
**~~INSURER APPROVED~~** X





# ***SHRINK-WRAP***

- ✓ ***LEAKPROOF***
- ✓ ***WIND RESISTANT***
- ✓ ***QUIET***
- ✓ ***AESTHETIC APPEARANCE***
- ✓ ***6-MONTH WARRANTY***
- ✓ ***DISASTER-AREA PROVEN***
- ✓ ***INSURER APPROVED***



# WHY IS SHRINK-WRAP BETTER?

Mother nature is not forgiving. Storms can come and go with little warning, and the damage can be unpredictable. StormWrappers acts in three steps: assessment, stabilization, shrink-wrapping. While outdated methods of property damage protection have called for blue tarps, shrink-wrap is a more effective option for six main reasons:

## **LEAKPROOF**

Shrink-wrap has the ability to form around structures and items tightly, creating a drum-tight seal that can prevent water from entering. This tight seal helps protect items against wind, rain, hail and other elements of severe weather. Blue tarps are made with looser weaving techniques which causes gaps between fibers allowing for potential leakage of water or debris through the fabric itself.

## **WIND RESISTANT**

StormWrap shrink-wrap is thicker and stronger than the plastic used in tarps, 10-12 mil shrink-wrap vs. 4-6 mil blue tarps which makes it less likely to be torn apart or blown away by strong winds. This reduces the amount of pressure put on that structure from powerful gusts of wind.

## **AESTHETICALLY APPEALING**

Shrink-wrap is more aesthetically appealing on the roofs and walls of buildings than blue tarp. This is largely because of its sleek, modern look. Shrink-wrap can be installed quickly and easily with minimal disruption to a building's aesthetics or environment. It allows for an uninterrupted line of sight that doesn't distract from other architectural features like windows or doors. It also doesn't ruin the building's aesthetic.

## **SECONDARY DAMAGE**

After the StormWrappers' team assesses and stabilizes the building's damages, Stormwrappers will begin drying in the structure: the number one goal is to protect against water damage, but blue tarps often allow moisture in, even if taped over. When blue tarps don't work correctly (which is often the case) they don't just fail to do their job, they typically lead to additional damage.

## **EFFECTIVENESS**

Why are blue tarps less effective? Well, they are made from polyethylene, which is not as strong or durable. When exposed to rain, wind and sun, the tarp can quickly become brittle and break apart. Blue tarps also don't adhere to the heating process that shrink-wrap does, making blue tarps much looser and less customizable to different structures. The easy tearing, poor reaction to harsh environments, and lack of customizability, makes blue tarps an inefficient option for protecting your property. Additionally, the installation of blue tarps can prove dangerous or even fatal when performed by untrained teams, let alone the sky-high potential liability for the building owner.

## **INSURER APPROVED AND WARRANTY**

Aside from the physical benefits of shrink-wrap, it is also insurer-approved and comes with a six-month warranty. All of these factors make shrink-wrapping the most effective option for protection against disaster damages.

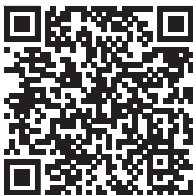


*Watch the  
installation  
process*

**PROVEN AND TRUSTED PARTNER TO**  
**RESTORATION COMPANIES**

**WE ARE THE LEADERS IN**  
**EMERGENCY SHRINK-WRAPPING**

We are a trusted and proven strategic partner, with the ability to provide a state-of-the-art solution for large complex building envelope projects.

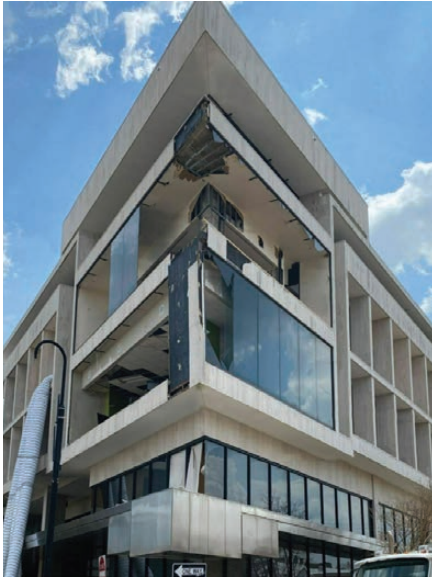


Learn more





**PROVEN PARTNER. SUPERIOR SOLUTION.  
USE US FOR YOUR MOST CHALLENGING RESTORATION JOBS.**



**ASSESSMENT**



**STABILIZATION**



**SHRINK-WRAPPING**

## **BLUE TARP vs. SHRINK-WRAP TIMELINE**

StormWrappers Warrantied Solution



**0-30 DAYS**  
wait for adjuster



**30-90 DAYS**  
select contractor  
+ procurement



**90-180 DAYS**  
project start date



**+180 DAYS**  
project delayed

Blue Tarp



Blue Tarp fails  
due to wind



2nd Blue Tarp  
failure



3rd Blue Tarp  
failure

***WE SERVICE***

***COMMERCIAL***

***WAREHOUSES***

***DISTRIBUTION CENTERS***

***FACTORIES***

***CONSTRUCTION SITES***

***INSTITUTIONAL***

***HOSPITALS***

***SCHOOLS***

***CHURCHES***

***MILITARY***

***RESIDENTIAL***

***HOUSES***

***APARTMENTS***

***DORMITORIES***

***HOTELS***



**STORMWRAPPERS**  
EMERGENCY ENCLOSURE EXPERTS



**GUARANTEE**  
RESTORATION SERVICES



**PAULDAVIS**  
RECOVER • RECONSTRUCT • RESTORE

**BEFORE**



**BEFORE**



**AFTER**



**STORMWRAPPERS**  
EMERGENCY ENCLOSURE EXPERTS

**AFTER**



**SERVPRO**  
Fire & Water - Cleanup & Restoration™



**BEFORE**



**BEFORE**

**AFTER**



**AFTER**



**BEFORE**



**BEFORE**





**AFTER**



**AFTER**





**BEFORE**



**BEFORE**

**AFTER**



**AFTER**





**BEFORE**

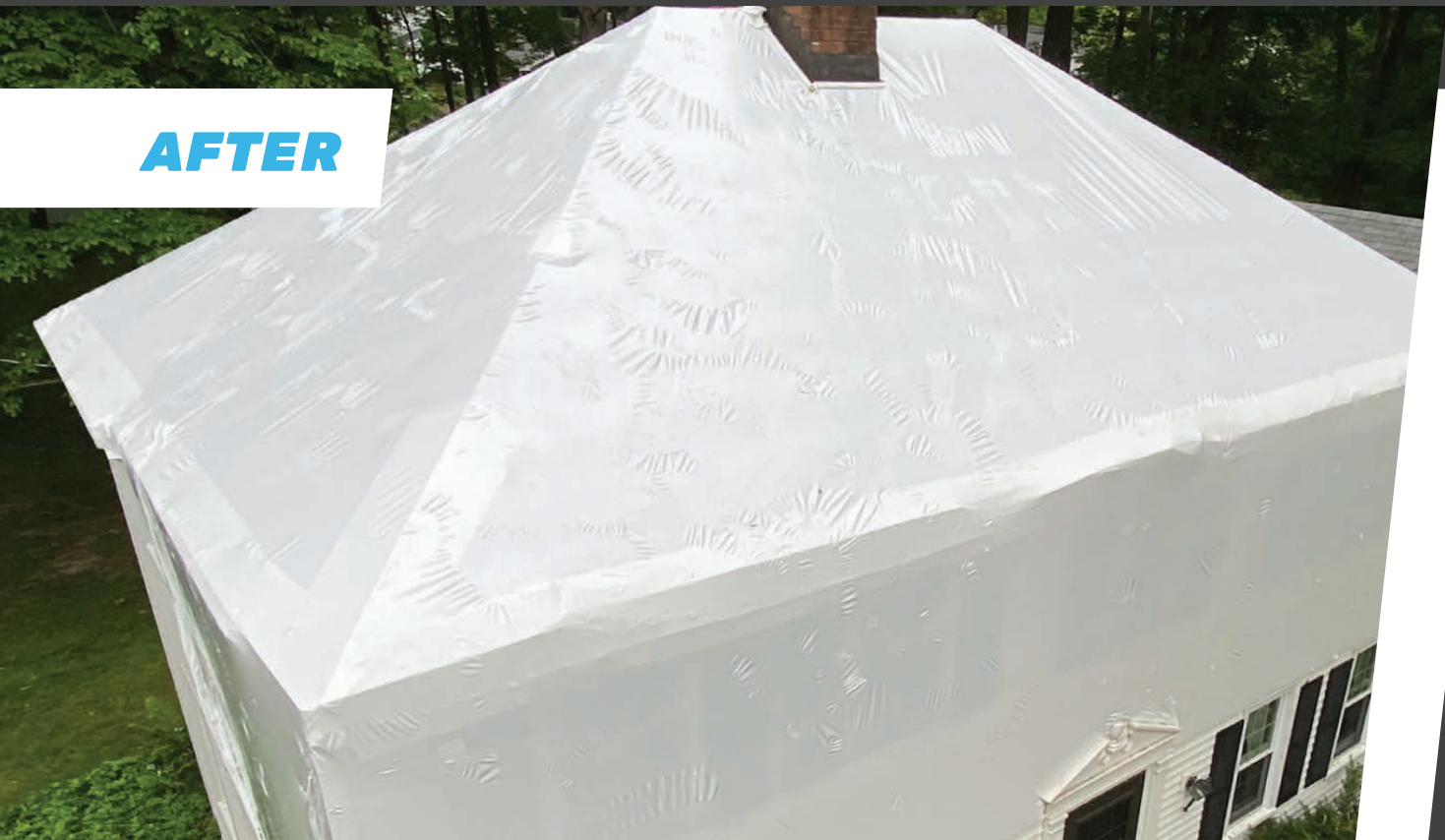


**BEFORE**

**AFTER**



**AFTER**





**BEFORE**



**BEFORE**

**AFTER**



**AFTER**





**BEFORE**



**BEFORE**



**AFTER**

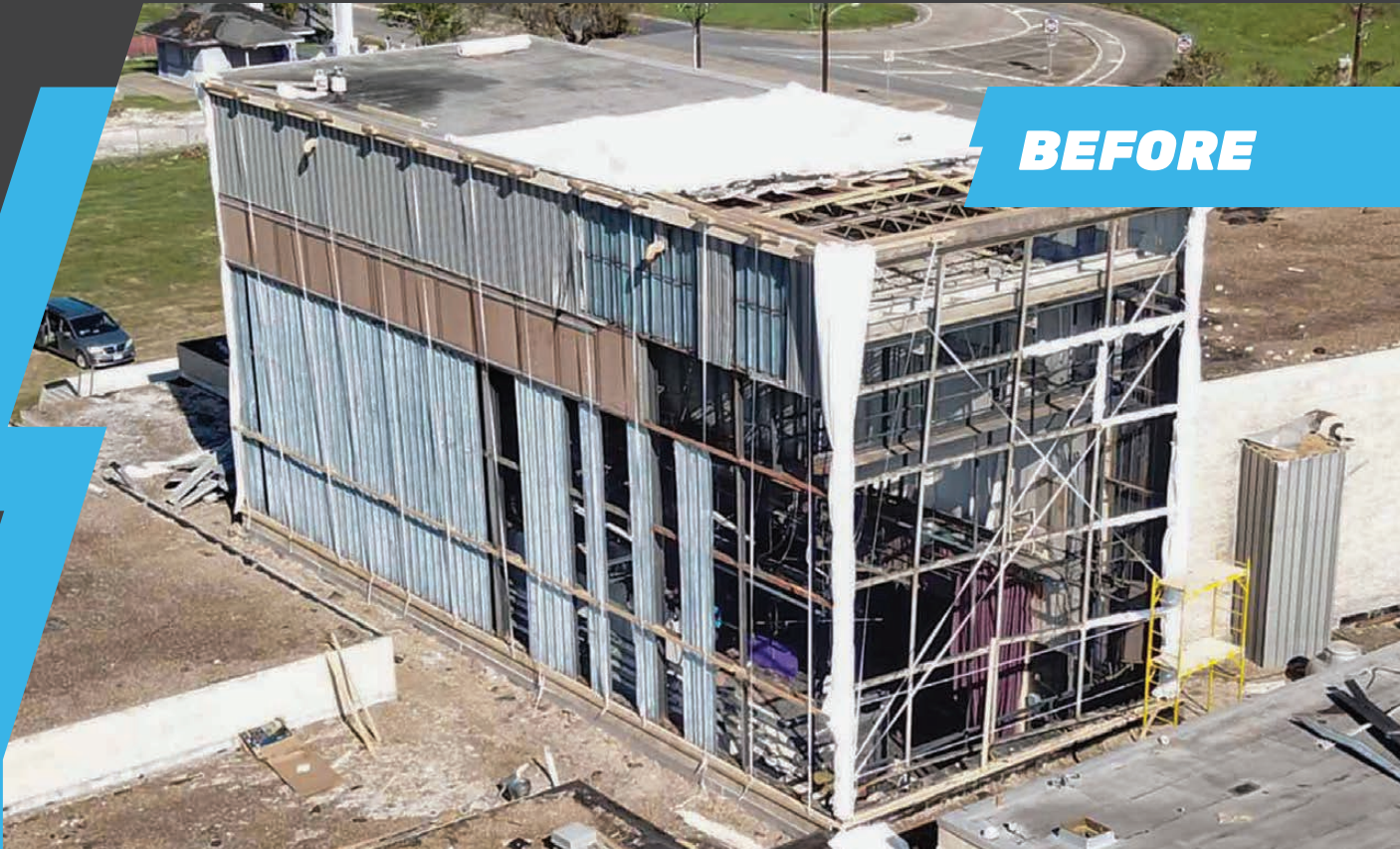


**AFTER**





**BEFORE**



**BEFORE**

**AFTER**



**AFTER**





**EMERGENCY ENCLOSURE EXPERTS**

## ***CONTACT***

**Andrew Gibeault**  
CEO



832-998-1787 (24/7 cell)

ANDREW@STORMWRAPPERS.COM

**888-8WRAPIT**  
**STORMWRAPPERS.COM**